

Retired Members Section

David Sergeant - Chairman
email:- davesergeant@yahoo.com

Maureen Vass - Secretary
email:- maureen.vass@btinternet.com
telephone:- 01257 271480

Newsletter

EDITION NO. 111 - July 2009

Edited & Produced by:

Mrs Christine Shaw
Zone 2, Buzon 02067,
Camino Tossal 5,
03729, Lliber,
Alicante, Spain.
email:- casashaw@gmail.com



On the web at :- <http://www.unisonlancs.org.uk/retired.asp>

Diary Dates 2009

County Hall

Bowling

Friday 31st July at 2pm

Come and join us at Penwortham Sports Club

Talks - 2pm

Friday 30th October

A talk given by the
County Welfare Rights Service

Northern Sub-Group Talks

Elms Hotel Morecambe

Tuesday 13th October

Derek Sanderson talks on
"The World of Antiques"

Tuesday 10th November

Derek Timms, with a talk called
"Days with a Bookworm".

Walks 2009

Monday 20th July

Roy's long walk of approximately **14** miles

Wednesday 22nd July

A walk to *Feizor* & along *Giggleswick Scar*

Wednesday 19th August

over *Snow Hill* to *Scorton* and back

Wednesday 16th September

uphill towards the *Nick of Pendle*

Bowling

Our first bowling day got off to a really good start at the *Penwortham Sports Club* of Friday 26th June. *Seventeen* members were there and five more had expressed interest. It was a brilliant summer's day to boot. It is worth pointing out that several members were happy to just sit in the sun or the club house and watch the rest of us play.



The next bowling day is Friday 31st July, starting 2.00. The *Penwortham Sports Club* is on *Liverpool Road* immediately on the left after the *Mary Magdalene church*. Charlie will bring handicap cards this time (whatever they are!) and all costs including refreshments will continue for the time being to be paid by the *Retired Members' Section*.

Newsletter

Ok, Ok, how many of you noticed that the *June 2006 Newsletter* was sent out by mistake? The lesson is just be careful if you have let your grandson near your laptop!



However, our thanks are due to the *County Hall* print and post sections for moving fast to get the "*real*" *June 2009 Newsletter* out. Also I am happy to report our Secretary, *Maureen*, after some weeks in and out of hospital is now better.

As usual there will **not** be an August Newsletter, the September Newsletter will contain all the information for our winter programmes.

Dave Sergeant

Chairman

News from the Executive Committee

This was our last meeting before our summer break which also means that we will *not* be issuing a Newsletter in August.

As advertised in last month's newsletter we have arranged a *bowling afternoon* on the *last Friday* in the month. Your committee were very please at the response for the June event and several members who could not attend on that afternoon have said they will be coming to the *July* session which is on the *31st July*. We have also booked the *28th August* and *25th September*. Pease make a note of these dates in you diaries.

I am sorry if I confused everyone by picking up from my computer an *old edition* of the newsletter, but I had only been out of hospital for a few days so wasn't back to normal. I am now feeling much better and am looking forward to my annual holiday at *Croyde Bay Holiday Village* and intend to relax and get fully fit.

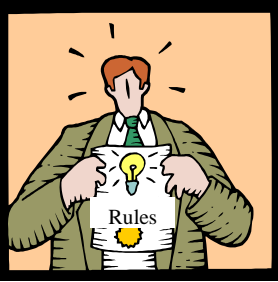
I hope everyone who is going on holiday has a safe journey and an enjoyable holiday.

Maureen Vass"
Secretary



Social Care Funding

As this newsletter is "*going to press*" an announcement has been made that the long awaited *Government Green paper* on *Social care funding* will be published during the week beginning 6th July. Apparently the paper will contain some alternative options to enable people to avoid selling their home in order to pay for their care. These are likely to be such things as *taking out insurance* in order to pay for care or imposing a charge on an individual's



inheritance. As usual the *devil will be in the detail* – watch this space for further information once the *Government* options have been published. There will be a consultation period of a few months on the options before the *Government* come forward with changes in legislation. It seems unlikely that we shall see any changes this side of a *General Election* unless the *Government* think that they can come up with some vote-winning proposals (which seems unlikely in the present economic climate).

Roger Rymer"
Vice Chairman

Northern Sub Group

2009/10 Monthly Talks at Morecambe

A programme is being arranged for the monthly talks at the *Headway Hotel*, on the second Tuesday of each month (as in previous years).

The first two are:-

- a) October 13th *Derek Sanderson's* talk is called "*The World of Antiques*", concentrating on porcelain and pottery. Although he will be able to value any items in this category which you choose to bring along, his presentation will include also a general talk on antiques together with *Slides*
- b) November 10th – *Derek Timms*, his talk called "*Days with a Bookworm*".

Both these speakers are *Retired Members of Unison*, so let's get our new season off to a good start by coming along and bringing your friends if appropriate. Free coffee/tea and biscuits will be available.



Ray Rudge"
Treasurer

Retired Members Walking Group

Group Correspondent: Don Windle, 25 The Howgills, Fulwood, Preston, Lancashire PR2 9LX. Telephone: (01772) 713820

The contents of this newsletter are not necessarily the views of the Retired Members Executive Committee.

Walk Dates for 2009

17th July (Roys long walk),
22nd July,
19th August, 16th September,
14th October,
4th November (Programme
meeting)
The 13th January 2010 walk to
be arranged.



Grid References give Location of Meeting Points

If you are not familiar with grid references, the meeting points can be located from most regular 4 miles to 1 inch motoring maps.

On **Monday 20th July Roy Rich** will be organising another walk of approximately **14** miles. If there are any keen walkers please contact **Roy** on 01772 454601 for arrangements. **Please note this will be a 10am start.**



The **July** walk will be on **Wednesday the 22nd**, start at 11am. Walk Leader is **Joan Booth**, you can contact her on 01772 732177.

Meet in the car park at STAINFORTH adjacent to the B6479 Settle to Horton in Ribblesdale road. **Landranger Sheet 98. Grid Reference 821 672.**

A walk of approximately 7 miles. There are toilets at the car park.

A walk to **Feizor** and along the **Giggleswick Scar** then back along the river **Ribble**.



The **August** walk will be on **Wednesday the 19th**, start at 11am. Walk Leader is **Joan Booth**, you can contact her on 01772 732177.

Meet at GARSTANG in the car park adjacent to the **Garstang Discovery Centre** rendezvous in the eastern end near the River Wyre.



Landranger Sheet 102. Grid Reference 493 454. Ordnance Survey Outdoor Leisure 41

A walk of approximately 8 miles. There are toilets at the car park.

Follow the river, then over the motorway to Grizedale and over Snow Hill to Scorton and back to Garstang.

The **September** walk will be on **Wednesday the 16th**, start at 11am. Walk Leader is **Tony Ingham**, you can contact him on 01772 782480.

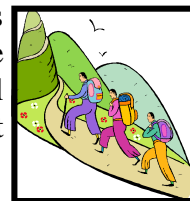
Meet in the car park in the middle of SABDEN. You may wish to park there for a small charge or find an on street space nearby.

Sabden lies to the east of Whalley and to the north of Padiham and so can be reached by either turning off the A671 near to the Spring Wood Picnic Site at Whalley or off the A6068 Padiham By Pass.

Landranger Sheet 103. Grid Reference 779 374. OS West Pennine Moors 19.

A walk of approximately 7½ miles. There are toilets at the car park.

The walk leaves the village uphill towards the **Nick of Pendle** and then circles **Sabden** in an anti-clockwise direction. There is an overall total of 800 ft . (244m) of climbing, but no lengthy steep sections.



Flo & Don Windle"
Walk Organisers

Wednesday 17th June 2009 Walk Circular Walk Around Malham

This year's June walk got off to a confusing start the weekend before, when everyone received a newsletter saying that the walk was starting from **Grassington** not **Malham**. The more eagle eyed spotted that the date referred to a walk three years earlier. Obviously gremlins had got into the works somehow. However, as a precaution, **Don Windle** decided he would go to Grassington on the morning of the walk in case anyone turned up there.

The weather omens the weekend before were not good either. Wednesday was forecast to be the only wet day in an otherwise dry and sunny week. Sadly the forecast was right when ten hardy walkers arrived at **Malham** in the rain. The consensus was that things could only improve so everyone donned their waterproofs and set sail.



The first two miles involved a steady, quite strenuous, climb through walled tracks and fields skirting **Pikedaw Hill** heading for **Nappa Gate** and

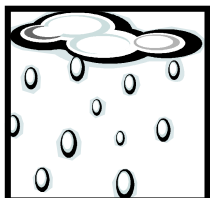
onto *Nappa Cross*. This was the high point of the walk and should have offered magnificent views; instead we were shrouded in mist. A brief stop was taken to view the remains of *Nappa Cross*, one of several wayside crosses in the area. A guidepost for travellers since monastic times it has been set into a wall on its original base.

Setting off again on a steady decent, what we thought were other intrepid walkers coming towards us through the mist turned out to be a herd of highland cattle.

A quick lunch was taken in the lee of a wall. Hopes for a break in the weather were raised when *Malham Tarn* appeared briefly through the gloom. Sadly it vanished like a mirage as quickly as it had appeared when the weather closed in again.

There was no let up in the rain, so having eventually negotiated our way across *Malham Lings* it was decided to miss out *Gordale Bridge* and *Janet's Foss* by taking the road directly back into the village. We had still covered 6¹/₂ miles and thoroughly tested the effectiveness of our all-weather gear.

However, having once again lived up to my honorary title of the 'rain man' of the walking group, I've decided that I'll continue to repeat this same walk annually, every June, until we get a dry day!



Trevor Draycott"
Walk Leader.

Membership Secretary's Report

Since our last report we have had **6** new *Members*. They are:

Mrs RA Ball
Penwortham;
David Climpson
Accrington;
Stephen Hindle
Nelson;
Mrs S Hoy
Morecambe;
Mrs J Mortimer
Samlesbury;
Mrs J Thorpe
Chorley.



Sadly 2 of our members have died, we offer our condolences to their family and friends.

Stephen Davidson
Heysham;
P Osborne
Preston.

**Our membership is 1914
(including 34 associate members)**

Available to Rent

"Luxury 2 bed pent house apartment on exclusive *La Finca* championship golf course **10 km** inland mid way between *Alicante & Murcia, Spain* for rental. **Sleeps 4.**

Well equipped and beautifully furnished. Breakfast balcony and spacious roof-terrace with stunning views of the Course and of the surrounding countryside.

Within easy drives of beautiful beaches, countryside, walks, cultural sites. Excellent for active or lazy holidays."

£250 - £300 per week + 20% off for all Unison Members.

For more information please visit:
<http://www.lafincagolfowners.org>

Or ring Bill Taylor on:-
07768 793 312 or 01254 668 404

Health Branch
Contact Irene Cottam on
01772 492936

Health Branch Outings

Wednesday 19th August

Welcome Days Out

Cranford Revisited, with Carvery Lunch

Tuesday 22nd September

Oswaltdwistle Mill

Lunch & Entertainment

Thursday 10th December

Christmas Lunch

at Bourne Poachers

contact Irene if you require further information