

Lancashire UNISON

Retired Members Section

David Sergeant - Chairman
email:- davesergeant@yahoo.com

Maureen Vass - Secretary
email:- maureen.vass@btinternet.com
telephone:- 01257 271480

Newsletter

EDITION NO. 120 - May 2010

Edited & Produced by:

Mrs Christine Shaw
Buzon 02067,
Camino Tossal 5,
03729, Lliber,
Alicante, Spain.
email:- casashaw@gmail.com



On the web at :- <http://www.unisonlancs.org.uk/retired.asp>

Diary Dates 2010

County Hall

Bowling

Friday 28th May at 2.00pm

come along to play or just chat

Talks - 2pm start

Friday 29th October

Rev Bob Worswick Perils of a Visiting Preacher

Friday 26th November

Mr Ronnie Ray 40 years in Showbiz

Northern Sub-Group

Summer Lunch

Tuesday 6th July

Headway Hotel.

See details for the Summer Lunch & the

2010/11 Talks timetable in this Newsletter

Walks 2010

Wednesday 19th May

A circular walk taking in part
of the *Rosendale Way*.

Health Branch

Croyde Bay 26th June

£315 00 for 7 nights Half Board

Welcome Day's Out trips on:-

Wednesday 21st July &

Wednesday 15th September

(details in this Newsletter)

Bowling

We are happy to say that the *bowling days* which we started last year can take place again. As with last year there will be *no costs* to members attending.

The *first bowling day* will be *Friday May 28th* and also the *last Friday* of the following months through *to September*. Our venue will again be the *Penwortham Sports Club* on *Leyland Road* with a start of *2.00 p.m.* There will be arrangements for refreshments and, as with last year, members are welcome to come and have chat in the sun and not just to play bowls.



Thompsons Solicitors

Members attending our *Annual General Meeting* were given presentations by the County "*Blues and Twos*" credit union and *Thompsons Solicitors*. *Maureen Vass* gave details of the credit union in the last *Newsletter* but the range of services supplied by *Thompsons* was something of a surprise.


the public service union


THE MOST EXPERIENCED
PERSONAL INJURY FIRM IN THE UK
www.thompsons.law.co.uk

UNISONdirect
0845 355 0845

While *Thompsons* main work is in employment related law they also deal with many other legal aspects which, therefore, are

UNISON BRANCH OFFICE - Room A38, County Hall Preston Lancs PR1 0LD
Tel. 01772 533072 or email:- unison.enquiries@lancashire.gov.uk

available to retired *UNISON* members. Their services range from *accident representation* and providing *wills*, they even include legal representation over such things as *neighbourhood disputes*. They can be contacted on the *UNISONdirect* phone number **0845 355 0845**.

Dave Sergeant

Chairman

Executive Committee News

At our *AGM* on 30 April, all our officers and committee members were re-elected to serve for 2010-11. We had two interesting talks by *Phil Liptrot* from *Thompsons Solicitors* and *Vicky Harrison* from *Blues and Twos Credit Union*.

At our first meeting following our *AGM* we have also re-elected the following additional officers: *Roger Rymer* as our *Vice-Chairman*, *Stella Talbot* as our *Membership and Distribution Secretary*, and *Fran Francis* as our *Talks Organiser*. We will be represented once again on the *Branch Committee* by our *Secretary*, *Welfare Secretary*, *Vice Chairman* and *Stella Talbot*. We will be represented this year at our *Conference* in October by *Kath Montgomery* and *Stella Talbot*.



We also agreed to nominate our current three representatives for election to the *Regional Retired Members Committee* at their next *AGM*.

We have also agreed to hold a *Bowling* afternoon at *Penwortham Bowling Club* on the last Friday of each month starting on **28 May to 24 September**.

Maureen Vass

Secretary

Neighbourhood Watch

For those of you who are not members of *Neighbourhood Watch schemes*, it is worth knowing that there are an increasing number of *postal, email and door to door scams* which seem to be becoming more and more sophisticated. If you belong to a group with average attendances of 15 or more, *Lancashire Trading Standards* will



come and give you a series of 6 *theatrical sketches* (lasting about an hour in total) which will illustrate these postal and door to door scams and tell you what to look out for. They also manage to present them in an entertaining way. To book the show you need to contact *Julie Waddington* at *Lancashire Trading Standards* Tel. 01772 533569.

Older People's Voices

As the number of older people (currently defined as anyone over 50) increases, they are assuming greater importance as a *pressure group*. Most districts in *Lancashire* now have their own *Older Peoples Partnership Board*, although in the case of *East Lancashire*, there is a joint board covering the 5 districts of *Burnley, Pendle, Ribble Valley, Hyndburn and Rossendale*. Each *Partnership Board* has an *Action Plan* designed to safeguard and improve conditions for older people in their area.



In addition, there is a *Lancashire Over 50s Assembly* which draws its membership from all the *Partnership Boards* and other community groups representing older people. It operates at a more strategic level. *The Partnership Boards* are seeking to engage with older people in various ways in order to address their concerns and priorities. If you have any concerns, you can contact one of your *local Board* members (if necessary, via your *local borough council*) for advice or support.

As a member of *South Ribble's Older People's Partnership Board* and currently their representative on the *Lancashire Over 50s Assembly*, I am happy to help in appropriate cases. My email is roger.rymer@btopenworld.com.

Roger Rymer

Vice Chairman

Northern Sub Group

Annual Summer Lunch
Tuesday 6th July at 12.30pm

This popular event has been arranged at the *Headway Hotel* and the menu includes a choice of 3 starters, 4 main courses and 3 sweets. The price, inclusive of tea/coffee and mints is £12.45 (*less than at the Elms Hotel last year*).

The contents of this newsletter are not necessarily the views of the Retired Members Executive Committee.

Barabara Rudge will give one of her holiday talks (assuming we will be in a private room).

An application is attached to be returned to **Ron Clements** at the address shown.

Timetable 2010/2011

One or two of our long supporting **Members** are having difficulties in attending monthly talks because of a timetable clash with their other interests.



At the March talk **Members** and friends present were asked if a change to **the third Tuesday** in the month would cause any problems, the response to which was none "none".

After consulting the **Headway Hotel** the timetable for **2010/2011** will now be as follows:-

October 12th (second Tuesday speaker booked)

November 16th (third Tuesday)

December 2nd (first Thursday no monthly talk)

January 18th, February 15th and March 15th
(Third Tuesdays)

Also included in this Newsletter is a breakdown of the Section's Finances please view this on page 6

Ray Rudge"

Treasurer

Retired Members Walking Group

Group Correspondent Don Windle, 25 The Howgills, Fulwood, Preston, Lancashire PR2 9LX.
Telephone: (01772) 713820.

Arrive in good time and lock up your car carefully.

Listen to the weather forecast and bring suitable clothing, plus dry socks.

Wear stout footwear, footpaths and bridleways can be muddy and eroded at any time of the year.



Our programme for 2010 is as follows

19th May, 23rd June, 14th July, 21st July (Roy's long walk) 11th August, 8th September, 13th October, 3rd November (Programme meeting)

Grid References give Location of Meeting Points

If you are not familiar with **grid references**, the meeting points can be located from most regular **4 miles to 1 inch** motoring maps.

The next walk is on **Wednesday 19th May** start at 11am. Walk Leader is **Roy Rich**, you can contact him on **01772 454601** or **Mobile: 07905023513**

Meet in the car park at **Clough Head** Information Centre on the north side of **B6232** approximately 2 miles west of **HASLINGDEN**. The Information Centre is located in a valley with three reservoirs around the drowned village of **Haslingden Grane**. Haslingden town is situated some six miles south of Accrington on the **A680**. Or **M65** off at junction **5** then **B6232 Haslingden**

Landranger Sheet 103. Grid Reference 752 232

A walk of approximately 8/9 miles. There are toilets in car park.

A circular walk taking in part of the **Rossendale Way**.

Flo & Don Windle"

Walk Organisers

Activities at County Hall

Talks are open to Everyone Members or Guests

The last talk of the season proved to be very interesting, and was well supported with our very loyal members and we were delighted to see quite a few new faces.

Mr Les Foden came with a brilliant display of flowers and demonstrated how he arranged tubs, troughs to get an interesting display of flowers. He also demonstrated large **hanging baskets** full of interesting plants in a professional and amusing way!! I think everyone enjoyed the **A.G.M**, free buffet lunch, finishing the day with the demonstration. The next talk will be in **October** the start of the next season so I hope you will come along and enjoy the afternoon. Until then I hope you all enjoy your holidays if you are going away, if not I hope we get some nice weather in this country we could all do with that.



The usual reminder for members and friends who have just joined us; the talks are held on the **last Friday** of the month during the winter months, they start at **2:00pm finishing approx. 3:15pm**, with a most welcome cup of **free tea / coffee / biscuits** and a social chat. They are held in one of the **Cabinet**

Rooms situated in County Hall, (unless directed elsewhere by the security person on the day). The entrance is from the **Pitt Street Main Door**, please ensure you sign in and **receive a visitor's badge**, state you are a **retired member** and ask where the talk being held. You are welcome to use the **staff cafeteria** situated near the main door before the talk begins, for a coffee snack or meal, again the security person will direct you.

Hope to see you there

Please keep sending your stamps to **Derian House**. Many envelopes get thrown away; it only takes a minute to tear the stamp off the corner of an envelope. (Please leave 1 inch around the stamp)



Save the stamps in a container till you get a few to send on to the address below this is an on going stamp appeal for a very worthy cause.

Derian House Children's Hospice
The Appeals Office, Derian House.
Chancery Road, Astley Village,
Chorley Lancs. PR7 1DH.
Fran Francis"

Talk Organiser 01772 742459

Membership Secretary's Report

Since our last report we have had thirteen new Members, we offer them a warm welcome. They are:

Mr G Armstrong

Bowden;

Mrs Baker

Chorley;

Mr D Bond

Longridge;

Mrs Sally Fairbrother

Blackburn;

M/s S Martin

Hoghton;

Mr RP Lecoustre

Penwortham;

Mr H Martin

Leyland;

Mr P Moorcroft

Chorley;

Mrs C Graham

Longton;

Miss Parker

Burscough;

Mrs M Peckett

Inskip;

Mr I Whittle

Euxton;
Mr G Waddelove
 Hoghton.



Sadly one of our members has died; we offer our condolences to his family and friends.

Mr KJ Moody

(Libraries Dept) Fulwood.

Our membership is 1936
(including 35 associate members)

Health Branch Trip

Contact Irene Cottam on 01772 492936

Croyde Bay in Devon, Unison Holiday Village Excellent Facilities. - 26th June to 2nd July. Coach to Devon and return **£315.00**, Dinner, Bed and Breakfast.

Includes 3 day trips out, **Entertainment and Dancing Nightly**, many activities during the day.

Wednesday 21st July

Welcome Day Out Trip with Courier to Ilkley Moor and District in the morning A four course carvery lunch at the Millstones, York's Tales Tour in the afternoon, Ending at Ripley village

Wednesday 15th September

Welcome Day Out Trip with Courier to Kirby Lonsdale Cumbria. Visiting Devil's Bridge and Ruskin's View. Lunch in a 13th Century Inn called Marton Arms. Afternoon a North Shires Tales Tour, travel the Yorkshire Dales, Lake District and Bowland finishing at Tulchan Knitwear Mill and the Country Harvest Outlet, £22.50 all inclusive for both trips.

Preston Bus Station at 9.15am or Sharoe Green Hospital at 9.30am for Both Trips

Apartments available to Rent

"Luxury 2 bed pent house apartment on exclusive **La Finca** championship golf course **10 km** inland mid way between **Alicante & Murcia, Spain** for rental. **Sleeps 4.**

Well equipped and beautifully furnished. Breakfast balcony and spacious roof-terrace with stunning views of the Course and of the surrounding countryside.

And for the colder winter months (yes it does get cold in Spain) we have a newly added 'whoppin grate'

cast iron wood burner.

Within easy drives of beautiful beaches, countryside, walks, cultural sites. Excellent for active or lazy holidays."

£300 - £325 per week + 20% off for all Unison Members.

For more information please visit:

<http://www.lafincagolfowners.org>

Or ring Bill Taylor on:-

07768 793 312 or 01254 668 404

Fully equipped 1 bedroom apartment (sleeps 2/4) in Gran Canaria. **£250.00 for the week. 10% Off for Unison Members.**

The complex of **Club Puerto Calma** is situated on a hill opposite the beach and marina of **Puerto Rico** with views over the port and gardens. Access to the beach is a pleasant short walk via the marina. There is a spacious sun deck around the pool, also a licensed snack bar. The resort organises numerous events during the day with water sports. The complex has a very nice restaurant and on occasions evening entertainment.

The apartment has a large balcony that gets most of the afternoon sun, with relaxing sun loungers, table & chairs and a large sun canopy.

The bars, restaurants and night spots of the town are all within easy reach.

Taxis, and an excellent supermarket, gift shop a few restaurants and snack bars are situated just across the road.

Not suitable for people with walking difficulties, but the complex is wheel chair friendly.

Telephone after 7pm 01772 742459



.....and - without prejudice - currently doing the rounds again on the Internet is the following letter:-

'Not Rearing Pigs' Business - Funny Pigs Story

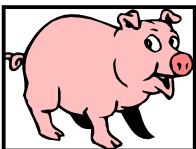
NIGEL JOHNSON-HILL, PARK FARM, LIPHOOK GU30 7JF

To.. Rt Hon David Milliband MP Secretary of State, Department for Environment, Food and Rural Affairs (DEFRA), London SW1P 3JR

1st July 2007

Dear *Secretary of State*,

My friend, who is in farming at the moment, recently received a *cheque for £3,000* from the *Rural Payments Agency* for not rearing pigs.. I would now like to join the "*not rearing pigs*" business.



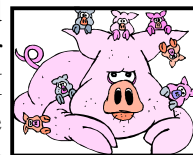
In your opinion, what is the best kind of farm not to rear pigs on, and which is the best breed of pigs not to rear? I want to I approach this endeavor in keeping with all government policies, as dictated by the *EU* under the *Common Agricultural Policy*.

I would prefer not to rear bacon pigs, but if this is not the type you want not rearing, I will just as gladly not rear porkers. Are there any advantages in not rearing rare breeds such as *Saddlebacks* or *Gloucester Old Spots*, or are there too many people already not rearing these?

As I see it, the hardest part of this programme will be keeping an accurate record of how many pigs I haven't reared. Are there any *Government* or *Local Authority* courses on this?

My friend is very satisfied with this business. He has been rearing pigs for forty years or so, and the best he ever made on them was **£1,422 in 1968**. That is - until this year, when he received a cheque for not rearing any.

If I get **£3,000** for not rearing **50** pigs, will I get **£6,000** for not rearing **100**? I plan to operate on a small scale at first, holding myself down to about 4,000 pigs not raised, which will mean about £240,000 for the first year. As I become more expert in not rearing pigs, I plan to be more ambitious, perhaps increasing to, say, **40,000 pigs not reared** in my second year, for which I should expect about **£2.4 million** from your department. Incidentally, I wonder if I would be eligible to receive tradable carbon credits for all these pigs not producing harmful and polluting methane gases.



Another point: These pigs that I plan not to rear will not eat **2,000 tonnes of cereals**. I understand that you also pay farmers for not growing crops. Will I qualify for payments for not growing cereals to not feed the pigs I don't rear?

I am also considering the "*not milking cows*" business, so please send any information you have on that too. Please could you also include the current *Defra* advice on set aside fields? Can this be done on an e-commerce basis with virtual fields (of which I seem to have several thousand hectares)?

In view of the above you will realise that I will be totally unemployed, and will therefore *qualify for unemployment benefits*. I shall of course be voting for your party at the next general election.

Yours faithfully,
Nigel Johnson-Hill

The Section's Finances

Accounts 2009

In *November 2008* an appeal was made for an increase in voluntary contributions as a consequence of the increased cost of printing newsletters. At the same time the *Branch* were asked for an increase in their funding, then at **£4000** per annum. Both initiatives produced an increased total income of approximately **£4300** (although the Branch no longer contributes towards the cost of postage where, for example, their publication *Loud and Clear* is included in the Newsletter).

Also the *Executive Committee* managed to reduce printing costs by some streamlining of the contents of *Newsletters* and arranging for the printing to be done on **A3** rather than **A4** paper.

These financial developments resulted in a much *healthier* financial result for the year 2009 than seemed probable the year before. A summary of the *Accounts* is set out below:-

<u>2008</u>		<u>2009</u>
<u>£</u>	<u>Income</u>	<u>£</u>
6248	Members Contributions	8557
4000	Branch Funding	5500
(-) 45	Annual Dinner - Surplus	71
<u>43</u>	Other Income	<u>42</u>
<u>£10246</u>		<u>£14170</u>
<u>£</u>	<u>Expenditure</u>	<u>£</u>
8028	Newsletters	7581
1627	Travel and Subsistence	1506
758	Retired Members' Conference(s)	457
420	Preston Talks	354
413	Northern Sub Group Talks	418
-	Bowls	107
<u>12</u>	Other Expenditure	<u>49</u>
<u>£11258</u>		<u>£10472</u>
- <u>£1012</u>	Deficiency/Surplus	+ <u>£3698</u>

*Accordingly the Section's Funds have increased from **£2948** at the beginning of 2009 to **£6646** at the end.*

UNISON RETIRED MEMBERS NORTHERN SUB GROUP SUMMER LUNCH
THE HEADWAY HOTEL MARINE RD EAST PROMENADE MORECAMBE

Tuesday 6th July 2010 - 12.00 for 12.30

MENU

STARTERS

a. **CHEFS HOMEMADE LEEK & POTATO SOUP**

Served with a bread roll

b. **MELON VERONIQUE**

Chilled Pearls of Honeydew Melon combined with Grapes

c. **CHICKEN LIVER PATE**

Served with onion chutney, oatcakes and a crisp salad

MAIN COURSES

1. **TRADITIONAL ROAST LEG OF LAMB**

Slices of Lamb served with rich gravy

2. **BAKED SALMON SUPREME**

Salmon Supreme topped with a Lemon and Herb Crust

3. **HAM PLOUGHMAN'S PLATTER**

Sliced roast ham, cheddar cheese, pickle, apple, served with a salad

4. **VEGETABLE FILO BASKET**

Melody of lightly roasted vegetables, in a light tomato & basil sauce served in a basket of filo pastry

Chefs selection of Potatoes and Vegetables

SWEETS

A. **STRAWBERRY SHORTBREAD**

Compote of fresh strawberries served with shortbread

B. **ICE CREAM TRIO**

Choice of ice cream flavours' topped with cream & wafer

C. **FRESH FRUIT SALAD**

Fruit salad served with cream

Tea and Coffee (served with mints)

Northern Sub Group

Summer Lunch - Tuesday 6th July 2010

I/We wish to attend the above I enclose my/our meal selections & cheque for £.....(at £12.45 per meal)

Please make cheques payable to:- 'Lancashire Unison Retired Members Section'.

Please PRINT your Name & Address:

Name

Address

.....

.....

Post Code *Tel. No.*

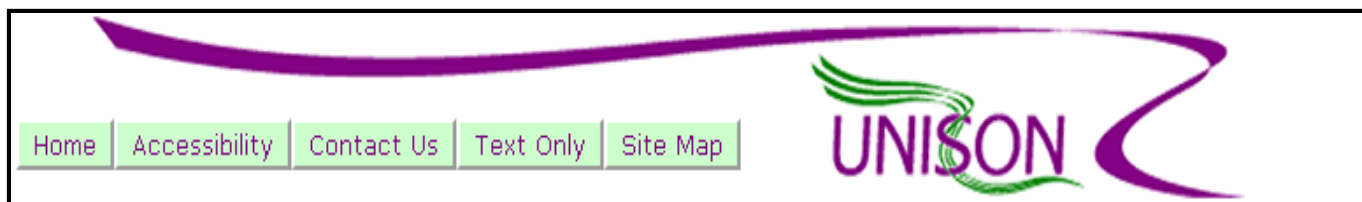
<u>Starter letter</u>	<u>Main Meal number</u>	<u>Sweet letter</u>

Please return bottom part of this sheet with meal requirement's to:-
R Clement, 2 Leycester Drive, Lancaster. LA1 5HP. (Contact Number:- 01524 35860)



don't forget you can view this & previous newsletters on the UNISON website

<http://www.unisonlancs.org.uk/retired.asp>



Welcome to the Lancashire Branch of Unison

Archive News

Hot Topics

Branch Information

Services

Join Us

Membership Benefits

Training

Resources for Branch Stewards

Adult Learners Week

Retired Members ▶

Activities

Links

Archived Items

Retired Members

Newsletters

Please see [Archived Items](#) for newsletters from previous years.

 [No. 119 - April 2010 \(size 877KB\)](#)

 [No. 118 - March 2010 \(size 560KB\)](#)

 [No. 117 - February 2010 \(size 360KB\)](#)

 [No. 116 - January 2010 \(size 198KB\)](#)

Please note that Acrobat PDF files require special software in order to read.



Please note that Acrobat PDF files require special software in order to read. This software can be downloaded free of charge from the [Adobe Systems, Inc.](#) website for a variety of platforms.

[Go to Download Page](#)

[Printer Friendly Version](#) [Site Terms](#) [Top of page](#)