

Lancashire UNISON

Retired Members Section

David Sergeant - Chairman
email:- davesergeant@yahoo.com

Maureen Vass - Secretary
email:- maureen.vass@unisonfree.net
telephone:- **01257 271480**

Newsletter

EDITION NO. 74 - March 2006

Edited & Produced by:

Mrs Christine Shaw

Buzon 139,
Camino Tossal 5,
03729, Liber,
Alicante, Spain.

email:- kris@lliber.fsworld.co.uk



Diary Dates - 2006

County Hall

Friday 31st March

Mr Melvin Carter - a talk on the "amusing" experiences of a professional photographer

Friday 28th April

Annual General Meeting

11 am in County Hall

followed at 2pm with a talk given by

Mrs Barbara Rudge on their Guatemala Trip

Walks

Wednesday 15th March

through the woodland to the Hodder Bridge and the old Cromwell's Bridge

Wednesday 19th April

An undulating walk along the Lune Valley to Barbon Village

Friday 24th March

Organ-Keyboard concert—see newsletter

Northern Sub Group

Next Talk - 2pm Headway Hotel

Tuesday 14th March

A talk by Irene Cottam on experiences as a W.A.A.F.

Visit to the Chocolate House of Blackburn

Tuesday 16th May

A must for all chocoholics, includes a Carvery Buffet Lunch

MEMBERSHIP

Our membership is now over *1800* and every month sees a further increase. We now have more members than the entire workforce of *Preston City Council*. This creates a nice problem for the *Executive Committee* since our members are not only from many different services; they are also from many different parts of the County. Indeed more than a few members do not live within the present County boundaries. The executive, therefore, needs to bear this in mind and organise events that would appeal to as many people as possible.



One of the heartening aspects of our recent new members is the number of people who have worked outside the main County headquarters buildings, indeed outside the Preston area. As has been commented on from time to time many County staff who work away from the main centres have not known that a retired members section exists but it would appear we have, at last, started to get our message out to staff "*out in the sticks*".

Another happy feature of the increasing number of members outside the main County Council centres is the success of the *Northern Sub-Group* based in Morecambe. The recent *St Valentines* tea dance was successful enough to plan another dance in September as well as next year. When wondering about the success of the *Northern Sub-Group* the comment was made "well we have far better views than Preston city centre". Added to this thought

were many positive comments from members attending the annual social evening at **Barton Grange**. This, of course, raises the question of our holding events outside the Preston centre – if only to provide car parking space! We will be happy to receive any views; however, we also plan a



questionnaire in the next Newsletter and hope to talk more about

venues etc at the **Annual General Meeting** on Friday **April 28th**.

County Hall Talks

The County Hall talks for January and February, organised by **Fran Francis** were up to her usual standard. January's talk was by **George Dobson** recounting his experiences on **Caribbean cruises**. It is easy to imagine a Caribbean cruise providing many a laugh and George was up to spinning the yarn. But when he got to the bit about the American widows.

Dave Sergeant"

Proposed Changes to Local Government Pension Scheme

Members may be interested to know some of the main changes to the Local

Government

Pension

Scheme,

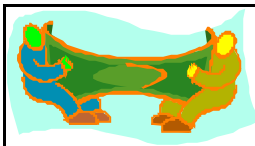
which are

being proposed from 1 April 2006 (although the Employers are seeking to defer them to October 2006 to tie in with the removal of the 85 year rule). None of these will affect current pensioners.

Employees would be able to remain in the Scheme until their 75th birthday.

Pensions would be increased if people draw benefits after age 65.

Flexible retirement would be allowed after age 60 linked to



reduction in hours or grade.

It would no longer be possible to convert some or all of a lump sum to additional pension.

People would be allowed to convert pension to lump sum – each £1 of pension surrendered would produce a lump sum of £12.

Employees wishing to retire between 60 and 65 would be allowed to make extra pension contributions to offset reductions in benefits.

People retiring would no longer be able to surrender part of their pension in order to increase pensions payable to their dependants.

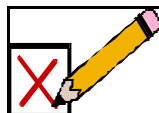
Transitional protection from the removal of the 85 year rule for employees aged 60 or over by 31 March 2013 is still under negotiation.

Roger Rymer "

News from the Executive Committee



Three members of your Committee attended the **Branch AGM** on Thursday 2nd March. The main item on the agenda was the desegregation of Police staff from the Lancashire Branch to enable them to form a **Lancashire Police Branch**. We were also brought up to date on the unsatisfactory negotiations which have taken place on the **Local Government Pension Scheme**. Working members are currently being balloted for strike action against the proposals which will worsen the benefits they would



receive when they retire.

Our **AGM** will take place at **11am on Friday 28 April** at **County Hall, Preston**. Please make a note of this important event, it will be followed by lunch and in the afternoon **Barbara Rudge** will give us a talk about a trip to **Guatemala**. If anyone wishes to stand for election to our Committee please complete the nomination form which was sent out with the February newsletter.

Maureen Vass"

Secretary



Northern Sub Group

February's Talk at County Hall

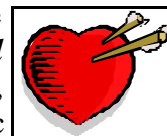
Peter Dobson, a Geordie, who has lived in Blackburn for many years gave an amusing and nostalgic talk about his younger days when he lived in **Tyne Side**, during the **1940's**. His description of his Grandparents house, their living conditions and what life was like then, brought many memories for most of us.

The only "thing" missing was **Members & Friends**. Not many supported the event and whatever special factors may have applied on that Friday it is still somewhat embarrassing to introduce a speaker to such a small audience in a large room. So a special plea for more of you to come along and please support the **March & April** speakers.



Valentines Day Tea Dance

This new venture seemed to be very successful. 35 members & friends attended the Event at the **Headway Hotel Morescombe**, dancing to the music provided **Ray Rudge** on his keyboard.



At the interval the hotel supplied excellent refreshments including

scones with jam & cream a variety of cakes and tea coffee & biscuits, whilst Ray introduced a musical quiz and organised a raffle.



Several requests where received for a repeat event, so the 2006/2007 programme for which dates have been booked at the Hotel include a tea dance in **September** and one in **March 2007**.



Talk - Headway Hotel
14th March at 2pm

The final Talk of the current series will be given by **Irene Cottam** (a Preston Health Services

UNISON Member) and relates to her



experiences as a **W.A.A.F.**

Do come along, bring your friends and enjoy a good natter after the Talk with free tea coffee and biscuits.

Trip to the Chocolate House Blackburn
16th May at 10am

Following the success of the visit to the cheese factory, Garstang last September, when



members & friends used their own transport, similar

arrangements have been made for a trip to the **Chocolate House Blackburn**.

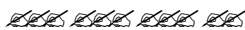
There will be a tour of the factory, a free raffle, shop facilities and a good choice **Carvery Buffet** – all for the inclusive price of **£11.75**.

Further details are given in the form enclosed with this newsletter which is to be returned to **Ron Clement** at the address shown.

Given the central location of this trip, it should appeal also to members & friends living in the **Preston/Blackburn** areas etc.

Ray Rudge

Treasurer

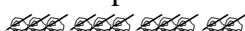
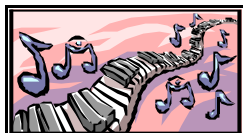


Activities & Social

Events

Organ-Keyboard concert 24th March at 7:30pm.

Ray Rudge is playing a concert on a large **Yamaha** Electronic Organ and his keyboard at **Elswick United Reform Church** near **Kirkham**, proceeds in aid of the old church Roof Fund. Ray will play a wide range of popular music and the price including supper is **£5**. Ray will be delighted to welcome **Members/Friends** at this special event.



The **January** talk given by **Mr George Dobson** proved to be a great success. He has such a jovial way of speaking he had us all in (stitches) with his version of **FACT** and **HOLIDAY FUN**. I will write and thank him on your behalf.

The **third Talk** of this year will be given by **Mr Melvin Carter:-** who will tell about funny happenings in his working life entitled:-

“The amusing experiences of a professional photographer”

The **last talk** of this season on **Friday 28th April** will be given by our treasurer’s (treasured wife) **Mrs Barbara Rudge:-** speaking about one of her many fabulous holidays

The one she has chosen is **“Guatemala”** with a display of unusual souvenirs.

See future newsletters for more information.

Do try to come along to these events the more the merrier as

they say, and it does make for a good atmosphere for everyone including the speaker. Come along not only to enjoy the afternoon’s performance but also to make new friends or renew old acquaintances. Hopefully we will again see many of our usual members who support these talks and hopefully they will bring along their friends everyone is welcome.

Finishing off the afternoon with free tea coffee and biscuits and a social chat. It’s a pleasant way to spend a winter’s afternoon.



Next the usual information for our new members, the talks will be held on the dates shown above. They are held in **COUNTY HALL PRESTON**; they start at **2:00pm** and usually last for **1 to 1½ hours**.

Please use the **COUNTY HALL ENTRANCE IN PITT STREET**, sign in at the reception area, obtain a visitors badge, tell the security person you are a retired member: they will direct you to the relevant cabinet room where the talks are to be held. You are welcome to use the Staff Cafeteria for a meal or snack before the performance. The cafeteria is now situated near the main entrance in **Pitt Street**; again the security person door will direct you.



Stamp Appeal.

Please keep sending your stamps to **Derian House**, many envelopes get thrown away, it only takes a minute to tear the stamp off the corner of an envelope (please leave 1 inch

**Our membership is 1819,
(including 41 associate members)**

around the stamp. Save the stamps in a container till you get a few to send on to "The Appeals Office" this is an on going stamp appeal

*Derian House Children's Hospice,
The Appeals Office, Derian House,
Chancery Road, Astley Village,
Chorley, Lancs. PR7 1DH.*

Fran Francis"

Social Secretary

~~~~~

Retired Members

Walking Group

Diary Dates are:-

*15th March, 19th April, 10th May,
14th June, 19th July,
26th July - (For Roy's long walk
please note a 10.00am start),
16th August, 13th September,
11th October & in 2007 the 10th January.*

Programme meeting will be 2.00pm on the 1st November.

Walks

The next walk is Wednesday 15th March. Start is at 11.00am. Walk leader is **Don Windle**, you can contact him on 01772 713820.

Meet at the **Village Hall Car Park, Hurst Green**. The B6243 links Hurst Green to Longridge, Clitheroe and Whalley via B6246. Each link is approximately five miles of twists and turns, plus odd speed restrictions.

Explorer Map 19 Grid Reference SD 683 380. Approximately 6 miles. Toilets in village.

Our walk goes through the grounds of Stonyhurst College through the woodland to the Hodder Bridge and the old Cromwell's Bridge and follow the Rivers Hodder and Ribble back to Hurst Green.

~~~~~

The **April** walk is on Wednesday the 19th April. Start at 11.00am.

Walk leader is **Don Windle** you can contact him on 01772 713820 Meet at **Devil's Bridge Kirkby Lonsdale** adjacent to the A683 one tenth of a mile north of the junction with the A65(T). Parking bays are marked out both east and west of **Devil's Bridge**, access across bridge limited to pedestrians.

Landranger Sheet 97, Grid Reference 616 782, Approximately 9 miles. Toilets on west side of the bridge.

An undulating walk along the **Lune Valley** to **Barbon Village** via field paths and tracks, several soft spots. Hopefully we will see a lovely show of daffodils along the way.

Flo & Don Windle"

Walk Coordinators



Questions and Answers from **'Family Fortunes'**

- 1) Something a blind man might use? - **A Sword**
- 2) A song with the word Moon in the title? - **Blue Suede Moon**
- 3) Name the capital of France? - **F**
- 4) Name a bird with a long Neck? - **Naomi Campbell**
- 5) Name an occupation where you might need a torch? - **A burglar**
- 6) Where is the Taj Mahal? - **Opposite the Dental Hospital**
- 7) What is Hitler's first name? - **Heil**
- 8) A famous Scotsman? - **Jock**
- 9) Some famous brothers? - **Bonnie and Clyde.**
- 10) Something that floats in a bath? - **Water**
- 11) An item of clothing worn by the Three Musketeers? - **A horse**
- 12) Something you wear on a beach? - **A deckchair**
- 13) A famous Royal? - **Mail**
- 14) Something that flies that

doesn't have an engine? - **A bicycle with wings**

15) A famous bridge? - **The Bridge Over Troubled Waters**

16) Something a cat does? - **Goes to the toilet**

17) Something you do in the bathroom? - **Decorate**

18) A method of securing your home? - **Put the kettle on**

19) A sign of the Zodiac? - **April**

20) Something people might be allergic to? - **Skiing**

21) Something you do before you go to bed? - **Sleep**

22) Something you put on walls? - **A roof**

23) Something slippery? - **A conman**

24) A kind of ache? - **A fillet of fish**

25) A jacket potato topping? - **Jam**

26) A food that can be brown or white? - **A potato**

27) Something sold by gypsies? - **Bananas**

28) Something red? - **My sweater**

And from the **National Lottery**

Jetset:- Eamonn Holmes:

What's the name of the playwright commonly known by the initials G.B.S.?

Contestant: William Shakespeare.

and the **Chris Searle show,**

BBC Bristol - Searle: In which European country is Mount Etna?

Caller: Japan.

Searle: I did say which European country, so in case you didn't hear that, I can let you try again.

Caller: Er... Mexico?

~~~~~

For Sale:- La-z-boy 'Albany' electric control lift/recliner chair in green dralon (flame resistant) Guarantee. £250. **Also:-** House of Centurion 'Bentley' manual recliner chair in red leather. Guarantee. £150. Tel:- **Mrs Renee Thomas** on 01772 336076

LANCASHIRE UNISON NORTHERN SUB GROUP

**VISIT TO THE CHOCOLATE HOUSE OF BLACKBURN
ON TUESDAY 16TH MAY 2006**

This visit is by own transport again and we meet at THE CHOCOLATE HOUSE reception at 10.00am for a start at 10.30 am.

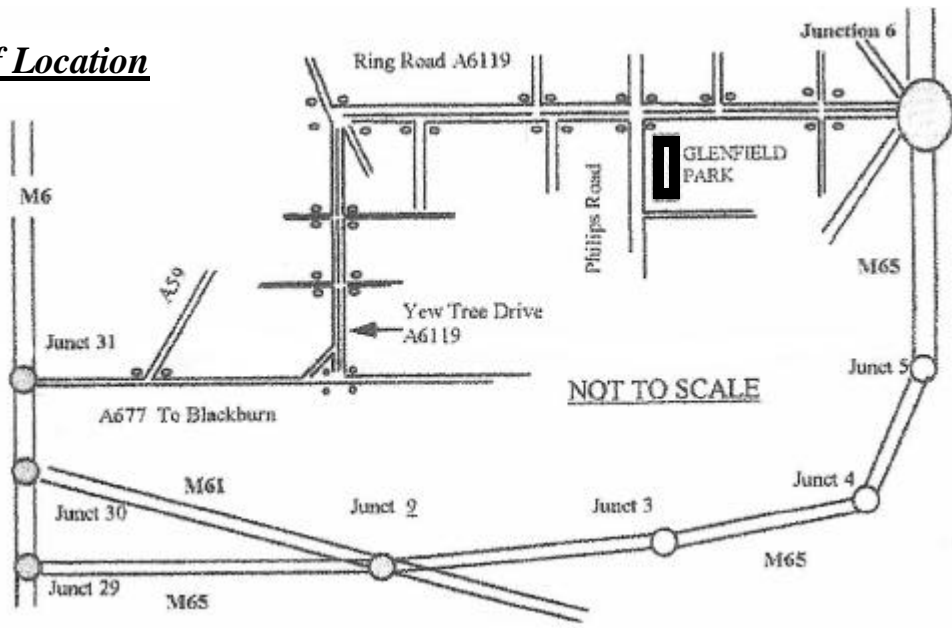
The visit at an all inclusive cost of £11.75 includes:

Fudge and drinks on arrival, a chocolates making demonstration, raffle tickets to win the chocolates made in the demo and chocolate samples.

Visit to the chocolate house kitchen followed by a three course Carvery Buffet Lunch.

After the meal you may wish to visit the Chocolate House Shop.

Map of Location



The Chocolate House, 1 Glenfield Park, Philips Rd, Blackburn, Lancs.

Please return the form below with payment for visit and meal:-

Northern Sub Group

Visit to the Chocolate House of Blackburn - Tuesday 16th May 2006

I/We wish to attend the above for which I enclose a cheque for £..... (£11.75 per person)

Please make cheques payable to:- 'Lancashire Unison Retired Members Section'.

Signature

Enter your Name & Address:

Name

Address

.....

.....

Tel No.

Please send to:-
**R Clement, 2 Leicester Drive,
Lancaster. LA1 5HP.**
Contact Number:- 01524 35860

Transport:- Please tick if appropriate -

I can take other passengers in my car:-

I have no car but wish to attend if I can have a lift-