

# Lancashire UNISON

## Retired Members Section

David Sergeant - Chairman  
email:- [davesergeant@yahoo.com](mailto:davesergeant@yahoo.com)

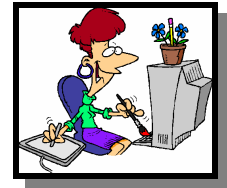
Maureen Vass - Secretary  
email:- [maureen.vass@unisonfree.net](mailto:maureen.vass@unisonfree.net)  
telephone:- 01257 271480

# Newsletter

EDITION NO. 76 - May 2006

Edited & Produced by:

Mrs Christine Shaw  
Buzon 139,  
Camino Tossal 5,  
03729, Lliber,  
Alicante, Spain.



email:- [kris@lliber.fsworld.co.uk](mailto:kris@lliber.fsworld.co.uk)

## *Diary Dates - 2006*

### Walks

#### **Wednesday 14th June**

A circular walk which includes  
Conistone and Bare House

#### **Wednesday 19th July**

A walk over Arnside Knott.

#### **Wednesday 26th July**

Roy's long walk of approximately  
14 miles. Start at 10am

### Northern Sub Group

#### Luncheon/Talk - Elms Hotel

##### **Tuesday 11th July**

The lunch will be followed with a Talk by  
Barbara Rudge based on a holiday  
adventure in South America.

### County Hall Talk

#### **Friday 24th November**

**Mr Ken Dagger,**

Talks and acts Gilbert and Sullivan  
and their operas

### Vienna Christmas Market

#### **3rd - 6th December**

A trip to a continental Christmas Market.  
Included are a tour of Vienna and  
a Strauss concert

## *...and so to 2007*

Those of you who attended the AGM will know that we are looking to organise events which members from outside the immediate Preston area find convenient to attend. **Ron Clement** has made a great start with his trips to the Garstang cheese factory and the visit to the Chocolate House at Blackburn on 16<sup>th</sup> May. Both events have caught the interest of members outside the Preston area. New places to attend are being suggested. If you have ideas – please contact us.

### Questionnaire

**Roger Rymer** has included a summary of the results of his questionnaire in the Newsletter. We will always be happy to receive any more views. Questionnaires are still being returned.

### Constitution

There was some discussion and a motion approved for changes in the constitution of the Retired Members Section. We are now in the situation where, although we have several officer posts vacant, we have filled all our Executive Committee Member places and, therefore, cannot elect any more to the Executive. As was observed at the **AGM**, this is silly and a change is needed.

### Vienna Christmas Market

One of the committee officers is **Stella Talbot** who is our Membership and Distribution Secretary. Many of you will remember that once there were two Secretaries, one for Membership and one for Distribution for the Newsletter. More, to prepare the Newsletter for posting used to take about six people every month. That Stella is doing the job of

seven people seems a good indication of the efforts of the members of the Executive Committee.

Stella has, again, organised a trip to a continental Christmas market. Those who have been in the past will know that continental Christmas Markets are seriously organised affairs. This year it is Vienna market that Stella is arranging. Included in the trip are



a tour of Vienna, a visit to the **Schonbrunn Palace** and a **Strauss** concert. Details in this and future Newsletters.

Departing from Manchester on 3<sup>rd</sup> December, returning 6<sup>th</sup> December the cost is **£419**. If you are interested contact Stella on **01254 853687**.

**Dave Sergeant**  
ॐ ॐ ॐ ॐ ॐ ॐ ॐ ॐ

**News from the Executive Committee**



At the first meeting of your Executive Committee we elected representatives to serve on your behalf on the Branch Committee. We also made nominations to **Retired Members Conference** and to stand for election for the **North West Retired Members Committee**. We also set out our programme of work for this coming year which will include reviewing our Constitution and Rules, consideration of the completed questionnaire and looking at activities for the future.

**Maureen Vass**  
Secretary

**Pensions Update**

First of all I am sure some of you will have noticed the “deliberate” error in last month’s update! One of the likely characteristics of a new Pension scheme from 2008 should have read “Pension based on career average earnings instead of **final** salary”.

In April the Local Government Employers agreed to discuss increased protection for existing staff from the removal of the **85** year rule. The Government have already said that they are prepared to introduce amendments to the **Regulations** to reflect what is finally agreed between the **Local Government Employers and Unions**.

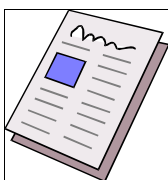
Debate continues about the changes to the national pension scheme proposed in the **Turner Report**. The Pensions Minister has said that the Government will produce a White Paper setting out its proposals on Pensions by early June.

**Results of Questionnaire**

Our thanks to everyone who completed and sent back the questionnaire which was circulated with the March newsletter; your stamps have gone to the Derian House Appeal.

**112** completed questionnaires were received.

**107** did not want to see any change to the newsletter. Many of these expressed their appreciation of the newsletter and said that they looked forward to receiving it.



**5** suggested changes along the following lines:-

- Newsletters should be less frequent
- Email should be used where possible
- An internet web page forum could be set up
- More information about

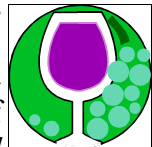
- changes at the workplace
- More humour
- The introduction of a regular **“For Sale”** section (with a charge made).

**90** did not currently attend any of the events.

**22** attended events but many only attended occasionally.

A significant number gave health and transport problems as the reason for non-attendance - **48** mentioned health problems and **41** transport problems. A significant number attributed non-attendance to both. **13** described the activities being organised as **“not their cup of tea”**. Other reasons given were that people were too busy with other activities and commitments or now lived too far away. **19** people said they would attend events if they were held closer to their home e.g. Blackpool, East Lancashire, Chorley, Lytham, Thornton Cleveleys. There was a feeling among these people that there was an over-concentration of events and pick-up points around Preston.

**23** people suggested a wide variety of other events which they would be prepared to attend including concert trips, theatre trips, bowling, meals out, “Jacob Joins”, race meetings, pub lunches, football and cricket matches, half day workshops on photography, art and craft and gardening (not to mention improving sex life for the over 60s and beauty for the retired!), town visits and stately home visits. Other suggestions were to form a wine making group, encourage singles and have a wider selection of meals at the **Annual Reunion**.



The Executive Committee will be considering the results of this

survey and what changes could realistically be made.

**Strategy for Older People**

Work continues on producing a strategy for older people in Lancashire covering the next 20 years. Ten main themes have been identified as being important for older people:

- Transport
- Health
- Employment and Volunteering
- Community Safety
- Social Care
- Leisure and Learning
- Finance
- Housing
- Consultation and Engagement
- Information and Advice

A half-day workshop was held on 24 April for about 100 people (older people and professionals) at which the participants identified the main issues and desired outcomes for each of the above themes.



The participants then spent an hour or so brainstorming the actions which were needed to achieve those desired outcomes. The results of this work will feed into the strategy which will be drafted over the next couple of months.

**Roger Rymer ”**

ॐ ॐ ॐ ॐ ॐ ॐ ॐ ॐ

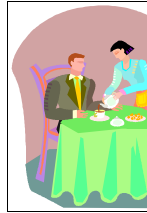
**Northern Sub-Group**

**Lunch/Talk – Elms Hotel  
11th July 12:30pm**

Following the success of the two previous summer lunches at the Elms Hotel, a private room has been booked for a repeat event on July 11<sup>th</sup>. The lunch will be followed with another Talk by **Barbara Rudge** based on a

holiday adventure in South America.

Further details and an application form are enclosed with this newsletter which is to be returned to **Ron Clement** at the address



shown (telephone 01524 35860).

Members & friends living in other parts of the county are most welcome to join their sub group colleagues

**Ray Rudge”**

Treasurer

ॐ ॐ ॐ ॐ ॐ ॐ ॐ ॐ

**Walks**

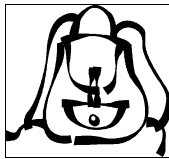
**Diary Dates are:-**

**14th June, 19th July, 26th July - (For Roy’s long walk please note a 10.00am start), 16th August, 13th September, 11th October & in 2007 the 10th January.**

**Programme meeting will be 2.00pm on the 1st November.**

ॐ ॐ ॐ ॐ ॐ ॐ ॐ ॐ

**April Diary Dates** indicated the next walk is the **10th May** but the newsletter will only be published after this date so the next walk is **Wednesday 14th June 2006** start at 11.00am.



Walk Leader is **Trevor Draycott** you can contact him on 01772 705876.

Meet at GRASSINGTON in the car park adjacent to the Yorkshire Dales National Park Information Centre.

Landranger Sheet 98 - Grid Reference 002 637. The walk is approximately 7 ½ miles, there are toilets at the car park.

A circular walk which includes Conistone and Bare House.

**Flo & Don Windle”**

Walk Coordinators

**Retired Members Walking Group**

**Kirkby Lonsdale to Barbon**

The weather forecast for the 19<sup>th</sup> April promised us a fair afternoon after a grey start for the **nineteen** who met at **Devil’s Bridge**. The grey start was soon speckled with rain drops as dark clouds of April showers drifted in from the Irish Sea to add more moisture to Ingleborough and her lofty colleagues.

Heading north through Casterton, named by the Anglo Saxons as a village by a Roman Fort (Readers Digest Atlas), our route follows field and woodland paths across part of the Lune Valley which attracted favourable comments from **John Ruskin** and **Turner** to paint a noted landscape picture in 1822.



We continued through fields stocked with sheep and new born lambs. Hoping to enjoy a picnic lunch on a sunny bank overlooking **Barbon Beck**, we crossed the ford and packhorse bridge at Beckfoot Farm. Unfortunately the black clouds chose that moment to reach a final crescendo, making sure everyone donned waterproofs and sought shelter under a holly bush. Within about ten minutes the blue sky became dominant allowing several determined colleagues to eat only slightly damp sandwiches!!

Our second crossing of **Barbon Beck** was via Hodge Bridge named in antique script on the map. The modern bridge probably includes masonry originally quarried by Roman soldiers, as here the **A683** road has been built directly onto the Roman Road

alignment.

In Barbon we turn south east, crossing the dismantled railway line onto a meandering collection of field paths, eventually leading into the garden of *Whelprigg*, a substantial mansion with an attractive display of daffodils, freshened by the April showers and glowing in the sunshine. A climb of some 30 metres including a very hazardous stile built into a 2 metre high dry stone wall brings us to the *Fell Foot Road*. A green track edged by walls with substantial rainwater puddles.

At random intervals small stiles have been built to give access to mini sheepfolds, each one occupied by a substantial weighty rock. One of our company assured us that these folly's had cost over **£500,000** during the twentieth century.

At times the sky was noisy with rooks and gulls, a heron departed from *Barbon Brook* as we approached, and several swallows swooped around the farmsteads. During the final hour the sun warmed the western face of *Browthwaite Pike* sufficient to encourage two buzzards to soar above our heads.

With the sun beginning to descend towards the hills west of *Arkholme*, we headed west to savour fresh brewed mugs of tea from the caravan at *Devil's Bridge*.

Walk Leader

*Don Windle*"

ॐ ॐ ॐ ॐ ॐ ॐ ॐ ॐ ॐ



### ***Membership Secretary's Report***

Since our last meeting we have had **19** new members. We offer them a warm welcome. They are:  
Mrs E E Currid (Social Services)  
Burnley;

Ms A J L Davidson (Social Services) Croston;  
Ms L Davies (Social Services) Morecambe;  
Mrs N Ducklin (Admin) Lancaster;  
Mrs J E Glennon (School Meals St Bedes) Aughton;  
Mr J Heap (Social Services) Clough Fold Rossendale;  
Mrs H Holden (Education) Fulwood;  
Mrs R Horn (Police) Thornton;  
T Patricia Kelly Skelmersdale;  
Mrs F Kirkham (Social Services) Warton;  
Ms A McHenry (Connexions) Bolton;  
Mrs A Lawson (Education) Broughton;  
Mrs P A Leigh (Libraries) Southport;  
J N Leivesley (Social Services) Accrington;  
Martin Reid (Education) Chorley;  
Mrs B Robinson (Care Services) Longridge;  
Miss E M Taylor (Social Services) Huncoat;  
Mrs D P Walker (Social Services) Fleetwood.  
**1 associate member**  
Rita Hatch  
Blackburn.



Sadly **10** of our members have died, we offer condolences to their families and friends.

Arthur V Brown (Social Services) Warrington;  
Barry Hatch (Social Services) Blackburn;  
Mrs J Hellon (Social Services) Staining, Blackpool;  
A H Hinde (Social Services) Morecambe;  
Miss Dorothy P Marsh (Ed &

Cultural Services) Grange;  
Mrs Sheila Rushton (Ed & Cultural Services) Clwyd;  
L R Walmsley (Architects) Much Hoole;  
W H Williamson (Ass. County Treasurer) Hutton;  
Mrs Constance Wright (Ed & Cultural Services) Burnley;  
E Wright (Environment) Preston.

ॐ ॐ ॐ ॐ ॐ ॐ ॐ ॐ ॐ

**Our membership is 1824,  
(including 29 associate members)**

***and last but not least - from your Editor... some answers given on Family Fortunes.***

- 1) Something a blind man might use? - A Sword
- 2) A song with the word Moon in the title? - Blue Suede Moon
- 3) Name the capital of France? - F
- 4) A sign of the Zodiac? - April
- 5) Name an occupation where you might need a torch? - A burglar
- 6) Where is the Taj Mahal? - Opposite the Dental Hospital
- 7) What is Hitler's first name? - Heil
- 8) A famous Scotsman? - Jock
- 9) Some famous brothers? - Bonnie and Clyde.
- 10) Something that floats in a bath? - Water
- 11) An item of clothing worn by the Three Musketeers? - A horse
- 12) Something you wear on a beach? - A deckchair
- 13) A famous Royal? - Mail
- 14) Something that flies that doesn't have an engine? - A bicycle with wings
- 15) A famous bridge? - The Bridge Over Troubled Waters
- 16) Something a cat does? - Goes to the toilet
- 17) Something you do in the bathroom? - Decorate
- 18) A method of securing your home? - Put the kettle on

**UNISON RETIRED MEMBERS NORTHERN SUB GROUP LUNCHEON AND TALK**

**THE ELMS HOTEL BARE MORECAMBE**

*Tuesday 11th July 2006 - 12.00 for 12.30*

**MENU**

**STARTERS**

a. **LEEK AND POTATO SOUP**

Freshly prepared leek and potato soup enriched with dairy cream

b. **DOVETAIL OF MELON**

Ripe dovetail of honeydew melon served with seasonal fruits and raspberry coulis

c. **PRAWN AND WALDORF PLATTER**

Chilled Icelandic prawns on a crisp Waldorf salad of apples, celery and walnuts napped by Marie Rose sauce

**MAIN COURSES**

A **ROAST RIB OF BEEF**

Presented with Yorkshire pudding and horseradish sauce

B **ROAST LEG OF LAMB**

Served with mint sauce and pan gravy

C **GRILLED SALMON**

Fresh fillet of salmon, grilled and served with lemon and herb butter

D **FARMHOUSE CHICKEN CASSEROLE**

Tender breasts of chicken cooked with red and green peppers, bacon, onion, mushrooms and red wine

***All served with a selection of fresh vegetables and potatoes  
or a crisp seasonal salad can be prepared at your request***

**SWEETS**

1 **FRESH CREAM GATEAU**

2 **LEMON SPONGE WITH CUSTARD**

3 **FRESH FRUIT SALAD**

4 **VARIOUS ICES**

*Freshly brewed Kenco coffee with chocolate confection*

**Northern Sub Group**

**Luncheon & Talk - Tuesday 11th July 2006**

*I/We wish to attend the above I enclose **my/our** meal selections & cheque for £.....(at **£12.50** per meal)*

Please make cheques payable to:- **‘Lancashire Unison Retired Members Section’.**

**Enter your Name & Address:**

Name .....

Address .....

Tel No. ....

*Signature* .....

<b><u>Starter letter</u></b>	<b><u>Main Meal letter</u></b>	<b><u>Sweet number</u></b>

Please send to:-

**R Clement, 2 Leycester Drive, Lancaster. LA1 5HP. (Contact Number:- 01524 35860)**