

Lancashire UNISON

Retired Members Section

Newsletter

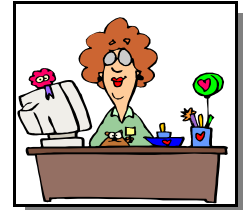
EDITION NO. 87 - May 2007

David Sergeant - Chairman
email:- davesergeant@yahoo.com

Maureen Vass - Secretary
email:- maureen.vass@btinternet.com
telephone:- 01257 271480

Edited & Produced by:

Mrs Christine Shaw
Buzon 139,
Camino Tossal 5,
03729, Lliber,
Alicante, Spain.



email:- casashaw@gmail.com

On the web at :- <http://www.unisonlancs.org.uk/retired.asp>

Diary Dates - 2007

County Hall Talks - 2pm

*Dates already booked
further information on the topics will be
published in a future Newsletter*

*Friday 26th October
&*

Friday 30th November

Northern Sub-Group

Summer Lunch
Tuesday 17th July

Come & join us for lunch and a pleasant
afternoon at the Elms Hotel Morecambe

Next Walk

Wednesday 16th May

This walk takes on the *Reelers* trail, which
is part of the *Weavers Way*.

Vacancies

At the A.G.M. there was the first opportunity to describe our new constitution which had come into effect just in time for this year's elections to the *Executive Committee*. Last year there was a consensus that time had caught up on us. In particular the *Executive Committee* was a bit ponderous and could do with streamlining. If you recall from previous years we had nine officers and nine other members, this created a confusing situation where, although we didn't have a *Bowling Secretary*, we couldn't fill the vacancy if there were already nine other *Executive Committee* members.



Therefore our new constitution has been changed to consist of four officers, *Chairman*, *Treasurer*, *Secretary* and *Welfare Secretary* with fourteen other members. Responsibilities to be considered at the *Executive Committee* as seen convenient at the time.

This year two of our *Executive Committee* did not seek re-election; *Ben White* and *Gladys Gillespie*, Gladys having been on the Committee no less than twelve years. At the A.G.M. *Eileen Haydock* was elected as a new member of the Committee. However, under the constitution we can co-opt to the Committee and at the first meeting of the new Committee we have co-opted *Ann McHenry* from *Careers* and *Terry Carter* from *Surveyors* (I know it's called *Environment* these days!).

Therefore, the quick witted among you will have

UNISON BRANCH OFFICE - Christ Church
Precinct, County Hall, Preston, PR1 8XJ.
Tel. 01772 533072 or

noticed there are three general vacancies on the Committee and if anyone would like to join us we would be happy to bring you on board and co-opt you.

Nancy Athey

The death of one of our members, *Nancy Athey*, is listed in details of our membership in the Newsletter. Nancy was a tremendous voluntary worker and her friend, *Marie Creaney* also from Social Services, has given us details of Nancy's activities. She founded the *South Ribble Key project for homeless people* and the *Challenge initiative at Royal Preston Hospital* for disabled people. A mother of five children Nancy was also involved with the *Chorley and South Ribble N.H.S. trust*, the *Chorley and Leyland Council for Voluntary Service* and *St Catherine's Hospice*. Nancy's voluntary work is truly worth mentioning and is a demonstration of so much of the work many of our members carry out. We would be more than happy to print details of any of our member's activities in the future.

Dave Sergeant"

Chairman

News from the Executive Committee



At the AGM on Friday 27 April in County Hall the following were elected as officers for the year 2007-2008:

Chairman - *David Sergeant*;
Secretary - *Maureen Vass*;

Treasurer - Ray Rudge; Welfare Secretary - Kath Montgomery. The new committee also comprises of: *Frank Baxendale, Stella Cunliffe, Ron Clement, Fran Francis, Jo Fenn, Eileen Haydock, Roger Rymer, Ileana Parr and Stella Talbot.* We have also had two volunteers to serve on the committee - *Anne McHenry and Terry Carter* - and they were both co-opted at our meeting on Friday. We still have 3 vacancies on the committee and if you would like to join us, please let me know. At the committee meeting we elected *Roger Rymer as our Vice Chairman, Stella Talbot as Membership/Distribution Secretary* and *Fran Francis, Ron Clement and Ileana Parr* will continue to undertake the various duties of the *Social Secretary*. Our representatives on the *Branch Committee* are *Maureen Vass, Kath Montgomery, David Sergeant* and *Stella Talbot*. We have decided the date for our next *Reunion and Dinner*. It will be at *Barton Grange Hotel* on Friday *11 April 2008*.



Maureen Vass"

Secretary

Northern Sub-Group

Summer Lunch, Tuesday
17th July, at 12:30pm
Elms Hotel Morecambe

A private room has been booked for this popular event, and the menu includes a choice of four starters, four main courses and four 4 sweets. The price inclusive of coffee & chocolates is **£12.95**; and afterwards *Barbara Rudge* will give one of her adventure

holiday talks.

An application form is attached to be returned to *Ron Clement* at the address shown.



Ray Rudge"

Treasurer

Retired Members Walking Group

Lancashire County Branch of Unison Walking Group Correspondent:
Don Windle, 25 The Howgills, Fulwood, Preston, Lancashire PR2 9LX. Telephone (01772) 713820. See the full *Programme Briefing* in the *February* edition of the Newsletter on the web at:-
<http://www.unisonlancs.org.uk/retired.asp>

Grid References give Location of Meeting Points

If you are not familiar with grid references, the meeting points can be located from most regular 4 miles to 1 inch motoring maps. The *Ordnance Survey Map Outdoor Leisure 41 Forest of Bowland and Ribblesdale*, has distinctive blue arrows pointing to several of the rendezvous points we regularly use and referred to where applicable.

2007 Walks

Diary Dates for the 2007 programme are:- 18th April, 16th May, 13th June, (18th July 10.00am start. Roy's long walk please note change of date). 11th July, 15th August, 19th September, 17th October, and in 2008 the 9th January.

There will be a *Programme Meeting* at 25 The Howgills, Fulwood, Preston at 2.00pm on Wednesday 7th November 2008. Each walk will be published in

future Newsletters.

Wednesday 16th May

Walk leader is **Eric Waterhouse** you can contact him on **01772 863743**.

Meet in the car park at Roddlesworth Information Centre, TOCKHOLES. The car park is reached by driving in through the **Royal Arms Hotel** car park. The Information Centre is located 1½ miles along the Tockholes road on the east side of the A675. Turn off the A675, 2 miles north of Belmont Village (right hand turn) or 4 miles south of junction 3 on the M65, (left hand turn) almost 3 miles south of Abbey Village. Confused! do not worry this is an isolated junction, where the A675 crosses moorland some 900 feet above sea level. Ignore Slipper Lowe Car Park on left.



Ordnance Survey: Grid Reference 665 214. Landranger Sheet 103 & Explorer 19 (West Pennine Moors)

This walk takes us on the **Reelers** trail, which is part of the **Weavers Way**.

A walk of approximately 8 miles, there are toilets in the car park.

A walk over **Dunsop Fell** and **Croasdale**.

Flo & Don Windle"

Walk Coordinators

Walk - 18th April

This month's walk saw 17 people set off from **Slaidburn** on a very nice Spring day. **Slaidburn** was formerly in the **West Riding of Yorkshire**, but its secular administration has been from Lancashire as part of the '**Honor of Clitheroe**' since the 12th century.



The walk was just over 8 miles long and afforded some excellent views of the **Dunsop Fells** and beyond. Leaving **Slaidburn** we soon passed **Ellerbeck Hall** with its **1694 datestone** and just beyond an old guidepost inscribed **Slaidburn, Hornby, 1816**. Leaving the quiet tarmaced road we soon passed **Burnside Cottage** with its solar panel, which powers the metal gate to the **Cottage Drive**. It was then on through a sunken way to the **Fell** proper, which except for a few boggy stretches was remarkably dry for the time of the year. As we gained height we could see **Stocks Reservoir** with **Gisburn Forest** beyond as well as **Pendle Hill**. Other views then opened up revealing the very heart of **Bowland**, with **Totridge** most prominent to the south. In the other direction **Penyghent** and



Fountains Fell made a shapely **Dales** skyline. The high point of the walk at **Dunsop Head** was

reached after two hours of a steady climb. This was to be the lunch stop, and whilst the sun was shining, we were all glad of the shelter of the wall from the cool wind.

The track then traversed a peaty section followed by another sunken way to begin the descent. Further views of **Stocks** came up and it was time to appraise a distant panorama dominated by the **Three Peaks** country. After an hour we reached the old Hornby Road or Salters Way, which has been a moorland highway for many centuries. It is best known as a salters' packway leading inland from **Morecambe Bay** to the farms of the **Ribble Valley**. For three miles it overlays the Roman Road running north from **Ribchester** to **Over Burrow** in the **Lune Valley**. Leaving the highway we saw in the

distance the tumbled down House of Croasdale, possibly the site of a medieval hunting lodge. From this point the walk followed the route of **Croasdale Brook**, which still ran strongly considering there had been little rain for many weeks. Eventually the Brook was crossed and **Croasdale House** was reached, and at this point one of our group was called on to give assistance to a sheep in distress giving birth to a lamb. After reaching **Shay Farm** the remaining two miles back into the village took us in a strait line through pasture land full of sheep with their young playful families taking full advantage of the warm sunshine.



After a thoroughly enjoyable day, a very welcome cup of tea and a cake was taken at the local shop.

Roy Rich"

Walk Leader



The date for Roy's long walk was the 4th July. Unfortunately this date is difficult for the majority of the small band of hardy walkers. The walk will therefore now take place on the **18th July**. Roy will make contact with participants on the May walk about the venue etc.

Roy Rich"

Walk Leader



Friday October 26th
Friday November 30th

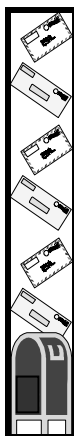
These are the talk dates that have been already booked for this year. I am in the middle of trying to get speakers for the year **2008 season**

of talks. I am hoping to get speakers that will accommodate all tastes, so please:- let me have your ideas on any speaker that you can recommend and would like to see again in our next years programme.

Once again thank you to everyone who comes along to support the talks it couldn't continue without your support.

Derian House Stamp Appeal

Please keep sending your stamps to *Derian House*, many envelopes get thrown away, it only takes a minute to tear the stamp off the corner of an envelope (please leave 1 inch around the stamp.) Save the stamps in a container till you get a few to send on to the address below this is an on going stamp appeal for a worthwhile cause.



*Derian House Children's Hospice,
The Appeals Office,
Derian House,
Chancery Road,
Astley Village,
Chorley,
Lancs. PR7 1DH.*

To the many animal lovers out there,

PLEASE CAN YOU HELP THE LANCASHIRE GERMAN SHEPHERD RESCUE?

By donating your old curtains bedding anything that can be used for the sick animals to sleep on. Anything that can be used as bedding will be very much appreciated.

Contact Ted Kewley on 01772 633860.

Fran Francis"

Talk Organiser
01772 742459



Members



Membership Secretary's Report

Since our last report we have had 6 new members. We offer them a warm welcome. They are:

- B Eaton
Preston;
- Ms E Etherington (Methodist Church Day Care) Lytham;
- Mrs JM Hall (Education) Mayfield Special School Chorley;
- PDW Llewellyn (Resources Property Group) Milnthorpe;
- JR Martin (Social Services) Leyland;
- Mrs CRS Preston (Cartmel Day Care) Morecambe.

Deaths of Members

Sadly 5 of our members have died; we offer our condolences to their family and friends.

- N Athey (Social Services) Penwortham;
- Mrs B Cameron-Clark (Social Services) Feniscowles;
- Mrs M Heap Barrowford, Nelson;
- TA Leadbetter (Environment) Fleetwood;
- Miss AM Thompson (Resources) Fulwood.

Our membership is 1865 (including 31 associate members)

.....and to finish

Actual Conversations between airline pilots and AT. allegedly
The German air traffic controllers at Frankfurt are renowned as a short-tempered lot.

They not only expect one to know one's gate parking location but how to get there without any assistance from them. So it was with some amusement that we (a Pan Am 747) listened to the following exchange between Frankfurt Ground Control and a British Airways 747, callsign Speedbird 206: Speedbird 206: "Frankfurt, Speedbird 206 clear of the active runway."



Ground: "Speedbird 206. Taxi to gate Alpha One-seven." The 747 pulled on to the main taxiway and slowed to a stop. Ground: "Speedbird 206. Do you not know where you are going?" Speedbird 206: "Stand by, Ground. I'm looking up our gate locations now." Ground (with quite arrogant impatience): Speebird 206. Have you not been here before?" Speedbird 206 (cooly): **Yes, twice in 1944 but I didn't stop!"**

.....
A *Pan Am 727* flight waiting for start clearance in Munich overheard the following: Lufthansa (in German): Ground. What is our start clearance time?" Ground (in English): "If you want an answer you must speak in English." Lufthansa (in English): "I am a German, flying a German airplane in Germany. Why must I speak English?" Unknown voice from another plane in a beautiful English accent: "Because you lost the ***** war!"

.....
A *DC-10 had* come in a little hot and thus had an exceedingly long rollout after touching down. San Jose Tower noted: "American 751, make a hard right turn at the end of the runway, if you are able... If not able, take the Guadalupe exit off Highway 101, make a right turn at the lights and return to the Airport."

UNISON RETIRED MEMBERS NORTHERN SUB GROUP LUNCHEON AND TALK

THE ELMS HOTEL BARE MORECAMBE

Tuesday 17th July 2007 - 12.00 for 12.30

MENU

STARTERS

1. **CREAM OF VEGETABLE SOUP**

Freshly prepared with dairy cream and croutons

2. **DOVETAIL OF MELON**

Ripe dovetail of honeydew melon served with seasonal fruits and raspberry coulis

3. **PRAWN COCKTAIL ELIZABETH**

On Iceberg lettuce with seedless grapes and Marie Rose sauce

4. **PATE MAISON**

Chicken and pork liver pate on torn leaves of lettuce with fruit chutney and fingers of hot toast

MAIN COURSES

A. **ROAST RIB OF BEEF**

Presented with Yorkshire pudding and horseradish sauce

B. **ESCALOPE OF PORK CALVADOS**

Braised with apple and crème fraiche

C. **SALMON HOLLANDAISE**

Lightly steamed with rich egg and butter sauce

All three served with a selection of fresh vegetables and potatoes/chips

D. **HAM SALAD**

With seasonal salads

SWEETS

w **FRESH CREAM GATEAU**

x **BAKED JAM SPONGE AND CUSTARD**

y **FRESH FRUIT SALAD**

z **VARIOUS ICES**

Freshly brewed Kenco coffee with chocolate confection

Northern Sub Group

Luncheon/Talk - Tuesday 17th July 2007

I/We wish to attend the above I enclose *my/our* meal selections & cheque for £.....(at £12.95 per meal)

Please make cheques payable to:- 'Lancashire Unison Retired Members Section'.

Enter your Name & Address:

Name

Address

Tel No.

Signature

<u>Starter number</u>	<u>Main Meal letter</u>	<u>Sweet letter</u>

Please return bottom part of this sheet with meal requirement's to:-
R Clement, 2 Leicester Drive, Lancaster. LA1 5HP. (Contact Number:- 01524 35860)