

Lancashire UNISON

Retired Members Section

Newsletter

EDITION NO. 88 - June 2007

David Sergeant - Chairman
email:- davesergeant@yahoo.com

Maureen Vass - Secretary
email:- maureen.vass@btinternet.com
telephone:- 01257 271480

Edited & Produced by:

Mrs Christine Shaw
Buzon 139,
Camino Tossal 5,
03729, Lliber,
Alicante, Spain.



email:- casashaw@gmail.com

On the web at :- <http://www.unisonlancs.org.uk/retired.asp>

Diary Dates - 2007

County Hall Talks - 2pm

*Dates already booked
further information on the topics will be
published in a future Newsletter*

Friday 26th October

Friday 30th November

Northern Sub-Group

Summer Lunch

Tuesday 17th July

Come & join us for lunch and a pleasant afternoon at the Elms Hotel Morecambe

Next Walks

Wednesday 13th June

Two dales are included in this walk.

Wednesday 11th July

Mainly a valley walk but with a steepish moorland climb

Wednesday 18th July

Roy's long walk of 15 miles

Preston Health Branch

Tuesday 14th August - at 9am

A trip on the Leeds/Liverpool canal,
lunch & coach ride

Wednesday 19th September - at 9am

Trip to Lightwater Village Complex,
lunch, then a visit to a Brewery

Trips Out

On the 8th May many of us went on the canal trip arranged by **Ron Clement**. If you were there you will remember! We had had a splendid April, warnings of global warming were everywhere, the summer was going to be hot. *Yes, well*. In the morning it pi-poured down. And did you know that the day after a bank holiday it is difficult to find mooring spaces? These things happen on top of the "ordinary" business of organising a trip out; **Ron and Jill** must have wondered if they were running a call centre for this trip which finished with **49** on board and **seven** still on the waiting list. It is worth remembering this, however, the weather brightened a bit in the afternoon and many of those present have gone out of their way to say they had a really enjoyable day. It is always the company which counts.

As with last year we are going in with the **Preston Health Branch** for some trips out.

If you want to go on one ring **Irene Cottam** on 01772 492936.

Tuesday August 14th, start 9.00.

Welcome days out to Foulridge Village. A trip on the **Leeds/Liverpool** canal, lunch at the **Calf's Head** at Worston followed by a coach ride round Pendle visiting **Pendle Mill**. Cost £24.



Wednesday September 19th, start 9.00. Trip to **Lightwater Village Complex**. A lunch is provided followed by a trip to a brewery to see beer being made. Cost £23.

UNISON BRANCH OFFICE - Christ Church Precinct, County Hall, Preston, PR1 8XJ.

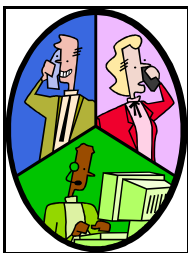
Tel. 01772 533072 or email:- unison@unison.lancscc.gov.uk

Many of our members went on Irene's trips last year and will know they are always well organised.

Dave Sergeant

Chairman

News from the Executive Committee



The Committee welcomed our 3 new members – **Eileen Haydock, Anne McHenry and Terry Carter** to their first

committee meeting. It is good to have new faces and new ideas. There was nothing major to discuss at this meeting, however, the committee did express their thanks and appreciation of all the hard work undertaken by the 'walkers group', who over many years have organised and led walks of varying difficulty for retired members and friends

Maureen Vass

Secretary

Northern Sub-Group

Summer Lunch, Tuesday 17th July, at 12:30pm Elms Hotel Morecambe

A private room has been booked for this popular event, and the menu includes a choice of four starters, four main courses and four sweets. The price inclusive of coffee & chocolates is **£12.95**; and afterwards **Barbara Rudge** will give one of her adventure holiday talks.

An application form is attached to



be returned to **Ron Clement** at the address shown

Ray Rudge

Treasurer

Retired Members Walking Group

Lancashire County Branch of Unison Walking Group Correspondent:

Don Windle, 25 The Howgills, Fulwood, Preston, Lancashire PR2 9LX. Telephone (01772) 713820.

The full **Programme Briefing** is the **February** edition of the Newsletter on the web at:-

<http://www.unisonlancs.org.uk/retired.asp>

Grid References give Location of Meeting Points

If you are not familiar with grid references, the meeting points can be located from most regular 4 miles to 1 inch motoring maps.

The **Ordnance Survey Map Outdoor Leisure 41 Forest of Bowland and Ribblesdale**, has distinctive blue arrows pointing to several of the rendezvous points we regularly use and referred to where applicable.

Diary Dates for the 2007 programme are:- 13th June, 11th July, 18th July Roy's long walk please note 10.00am start, 15th August, 19th September, 17th October, and in 2008 the 9th January.

There will be a **Programme Meeting** at 25 The Howgills, Fulwood, Preston at **2.00pm** on Wednesday **7th November 2008**.

Each walk will be published in future Newsletters.

Wednesday 13th June

Walk leader is Trevor Draycott

you can contact him on 01772 705876, walk starts at **11am**.

Meet at the car



park on the north side of the **B6265 in KETTLEWELL**. This is approximately 13 miles north of the A59 (Skipton By Pass) signed to Grassington.

You will pass **Kilnsey Crag Fishing Lakes** after approximately 8 miles.

Ordnance Survey Outdoor Leisure 30. Grid Reference 968 724. A walk of approximately 7 miles. There are toilets near the car park.

Two dales are included in this walk, which starts from **Kettlewell in Wharfedale** and climbs steeply across rugged moorland, to drop down into Littondale at the picturesque village of Arncliffe. Then comes a stretch of easy riverside walking by the Skirfare, before returning to Kettlewell over the shoulder of Knipe Scar.

Wednesday 11th July

Walk leader is **Peter Kilgour** you can contact him on 01257 279650 walk starts at **11am**.



Meet in **DUNSOP BRIDGE** on the car park at the east end of the village.

Ordnance Survey Outdoor Leisure 41. Grid Reference 661 501. A walk of

approximately 8 miles. There are toilets at car park.

Mainly a valley walk but with a steepish moorland climb to the Whins Brow ridge and a steep descent.

Flo & Don Windle

Walk Coordinators

Roy's Long Walk

Roy's long walk of 15 miles on the **18th July** will start from Appleby in Cumbria at **10am**. It is approximately 72 miles from Preston leaving the M6 at Junction 38 for Tebay - allow two



hours. The precise starting point will be made known on the normal July walk on the 11th July or contact **Roy** on **01772 454601**. *He will not be on the June walk.*

Roy Rich"

Walk Leader

Ribchester Walk - 14th March

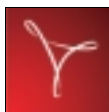
This month's walk started from the Information Centre at Tockholes, near Blackburn, and took in most of the "Reelers



Trail" of the "Witton Weavers Way". This was the third trail walked by the group and now only leaves one to be followed to

complete the whole of the "Way". There were *ten starters – and finishers!* - and as usual on these trails, were each handed a leaflet prepared by the **Blackburn and Darwen Country Services Department** describing the route and its features in some detail. For those of you who didn't come with us, you can find the same on www.visitlancashire.com, click "county escapes", then "Lancashire walking routes" and "Reelers Trail". Or alternatively simply look up "Lancashire walking routes" on **Google!!**

You will however need **Adobe Reader**. You can download it from:



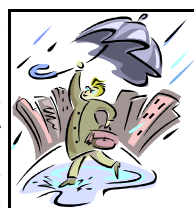
<http://www.adobe.com/products/acrobat/readstep2.html>

Starting from the Information Centre entailed about a mile of a trek to join the circuit of the trail at **Higher Hill Farm**, which is a 17th. Century grade 2 listed building with a garderobe on the outside wall. This small room jutting out at first floor level for all to see was once the height of fashion in hygienic toilets! Passing the farm we were soon on to one the oldest highways in this district being an old packhorse

road linking Preston to Rossendale and dating back to Saxon times. Further along we inspected in the grounds of **St Stephen's Church** the **Toches** stone, supposedly a remnant of the old **Parish Preaching Cross** dated **684 AD**, and also the memorial to **John Osbaldeston** the inventor of the **Weft Fork**.

We passed through the wooded area near **Sheep Bridge Brook** where there is evidence of a skirmish having taken place during the **Civil War** since the remains of 40 horses and various relics have been unearthed. From here we followed alongside part of the M65 for about a quarter of a mile before passing under it to carry on along **Stockclough Lane** and thence to the **Leeds and Liverpool Canal**. Lunch was taken by most of the group under the

Livesey Branch Road Bridge, which provided shelter from a slight downpour. We



continued along the tow path for about a mile before climbing the bank towards **Stanworth Farm** and then descending eastwards to pass under the M65 again and entering **Stanworth Wood** - part of the largest area of semi-ancient woodland in south Lancashire and is botanically very rich.

Leaving the wood behind the route crosses the River Roddlesworth and then continues up a steep bank which is often very muddy but fortunately not too bad on this occasion. However one member was somewhat over come by the effort that she gave the group such a scare that they felt it necessary to call the **ambulance services!** Fortunately she recovered sufficiently before the call was ended and was able to complete the walk without further ado, but it did prove a useful exercise in dealing with the emergency services in

such situations!

Passing through Bradley Farm we followed the farm track for about half a mile and then along a grassy bank before crossing the River Roddlesworth again. From there we continued along a track that led us to the **Hare and Hounds Public House** in Abbey

Village but without a stop (!) we continued a long the embankment of **Rake Brook Reservoir** and shortly afterwards



the embankment of the **Lower Roddlesworth Reservoir**. We took the track through the wood for some 500yards where we left the **Reelers Trail**, and, after taking a short break, continued above the **Higher Roddlesworth Reservoir** to where the tracks in the wood cross. From there we took the steep upward track that led us back to the **Royal Arms Public House** and the Information Centre car park from where we had started the walk

There had been heavy rain just before the start of the walk but fortunately we had none to contend with during it, except for that at lunchtime although the weather was generally cloudy. The leaflet states that the walk covers a beautiful rural landscape where historical sites of industry, farming and religion combine to produce a fascinating trail –we all finished the full eight miles of the walk in good shape by 4pm and I don't think we would disagree!

Eric Waterhouse"

Walk Leader



Friday October 26th
Friday November 30th

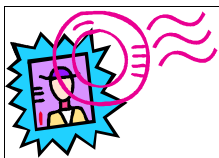
These are the talk dates that have

been already booked for this year. I am in the middle of trying to get speakers for the year **2008 season** of talks. I am hoping to get speakers that will accommodate all tastes, so please:- let me have your ideas on any speaker that you can recommend and would like to see again in our next years programme.

Once again thank you to everyone who comes along to support the talks it couldn't continue without your support.

Derian House Stamp Appeal

Please keep sending your stamps to Derian House, many envelopes get thrown away, it only takes a minute to tear the stamp off the corner of an envelope (please leave 1 inch around the stamp.) Save the stamps in a container till you get a few to send on to the address below this is an on going stamp appeal for a worthwhile cause.



***Derian House Children's Hospice,
The Appeals Office,
Derian House,
Chancery Road,
Astley Village,
Chorley,
Lancs. PR7 1DH.***

To the many animal lovers out there, PLEASE CAN YOU HELP THE LANCASHIRE GERMAN SHEPHERD RESCUE?

By donating your old curtains bedding anything that can be used for the sick animals to sleep on.

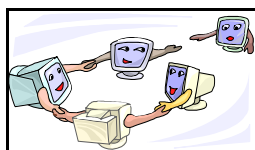
Anything that can be used as bedding will be very much appreciated.

Contact Ted Kewley on 01772 633860.

Fran Francis"

Talk Organiser
01772 742459

Members



Membership Secretary's Report

Since our last report we have had 3 new members. We offer them a warm welcome. They are:

Mrs GA Crossley
(Adult and Com Services)
Weeton;
Mrs J Gresty
Lytham St Annes;
Mrs D Swarbrick
(Fire and Rescue Service)
Chorley.

Deaths of Members

Sadly 4 of our members have died; we offer our condolences to their family and friends.

Mrs D Blackhurst
Blackpool;
Mrs E Dunderdale
Barrowford, Nelson;
Mrs A Jackson
Blackpool;
Mrs B Rietiker
Walmer Bridge, Preston.

**Our membership is 1864
(including 31 associate members)**

and to finish
Why is....

- 01.** Is it good if a vacuum really sucks?
- 02.** Why is the third hand on the watch called the second hand?
- 03.** If a word is misspelled in the dictionary, how would we ever know?
- 04.** If Webster wrote the first dictionary, where did he find the

words?

- 05.** Why do we say something is out of whack? What is a whack?
- 06.** Why does "slow down" and "slow up" mean the same thing?
- 07.** Why does "fat chance" and "slim chance" mean the same thing?
- 08.** Why do "tug" boats push their barges?
- 09.** Why do they call it a TV set when you only have one?
- 10.** Why are they called "stands" when they are made for sitting?
- 11.** Why is it called "after dark" when it really is "after light"?
- 12.** Doesn't "expecting the unexpected" make the unexpected expected?
- 13.** Why are a "wise man" and a "wise guy" opposites?
- 14.** Why do "overlook" & "oversee" mean opposite things?
- 15.** Why is "phonics" not spelled the way it sounds?
- 16.** If work is so terrific, why do they have to pay you to do it?
- 17.** If all the world is a stage, where is the audience sitting?
- 18.** If love is blind, why is lingerie so popular?
- 19.** If you are cross-eyed and have dyslexia, can you read all right?
- 20.** Why is bra singular and panties plural?
- 21.** Why do you press harder on the buttons of a remote control when you know the batteries are dead?
- 22.** Why do we put suits in garment bags and garments in a suitcase?
- 23.** How come abbreviated is such a long word?
- 24.** Why do we wash bath towels? Aren't we clean when we use them?
- 25.** Why doesn't glue stick to the inside of the bottle?
- 26.** Christmas is weird. What other time of the year do you sit in front of a dead tree and eat candy out of your socks?

— . . . — . . . — . . .

UNISON RETIRED MEMBERS NORTHERN SUB GROUP LUNCHEON AND TALK

THE ELMS HOTEL BARE MORECAMBE

Tuesday 17th July 2007 - 12.00 for 12.30

MENU

STARTERS

1. **CREAM OF VEGETABLE SOUP**

Freshly prepared with dairy cream and croutons

2. **DOVETAIL OF MELON**

Ripe dovetail of honeydew melon served with seasonal fruits and raspberry coulis

3. **PRAWN COCKTAIL ELIZABETH**

On Iceberg lettuce with seedless grapes and Marie Rose sauce

4. **PATE MAISON**

Chicken and pork liver pate on torn leaves of lettuce with fruit chutney and fingers of hot toast

MAIN COURSES

A. **ROAST RIB OF BEEF**

Presented with Yorkshire pudding and horseradish sauce

B. **ESCALOPE OF PORK CALVADOS**

Braised with apple and crème fraiche

C. **SALMON HOLLANDAISE**

Lightly steamed with rich egg and butter sauce

All three served with a selection of fresh vegetables and potatoes/chips

D. **HAM SALAD**

With seasonal salads

SWEETS

w **FRESH CREAM GATEAU**

x **BAKED JAM SPONGE AND CUSTARD**

y **FRESH FRUIT SALAD**

z **VARIOUS ICES**

Freshly brewed Kenco coffee with chocolate confection

Northern Sub Group

Luncheon/Talk - Tuesday 17th July 2007

*I/We wish to attend the above I enclose **my/our** meal selections & cheque for £.....(at **£12.95** per meal)*

Please make cheques payable to:- 'Lancashire Unison Retired Members Section'.

Enter your Name & Address:

Name

Address

.....

Tel No.

Signature

<u>Starter number</u>	<u>Main Meal letter</u>	<u>Sweet letter</u>

Please return bottom part of this sheet with meal requirement's to:-
R Clement, 2 Leycester Drive, Lancaster. LA1 5HP. (Contact Number:- 01524 35860)